

**Priyanka S Bharadwaj\* and Prajna M Udupa**

Department of Biotechnology, BMS College of Engineering, Visvesvaraya Technological University, Bangalore, India

Received: 15 March, 2019

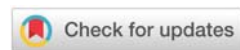
Accepted: 30 March, 2019

Published: 02 April, 2019

\*Corresponding author: Priyanka S Bharadwaj, Department of Biotechnology, BMS College of Engineering, Visvesvaraya Technological University, Bangalore, India, E-mail: priyankasbharadwaj@gmail.com

Keywords: Actinomycetes; Pectinase; Enzymatic optimization; Phylogenetic analysis; *Streptomyces thermocarboxydus*

<https://www.peertechz.com>



Research Article

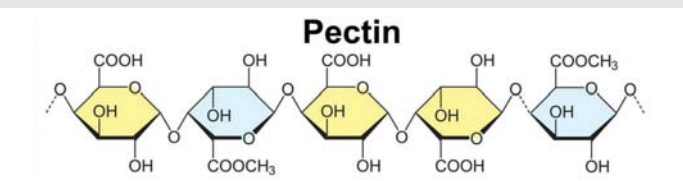
# Isolation, Purification and Characterization of Pectinase enzyme from *Streptomyces thermocarboxydus*

Abstract

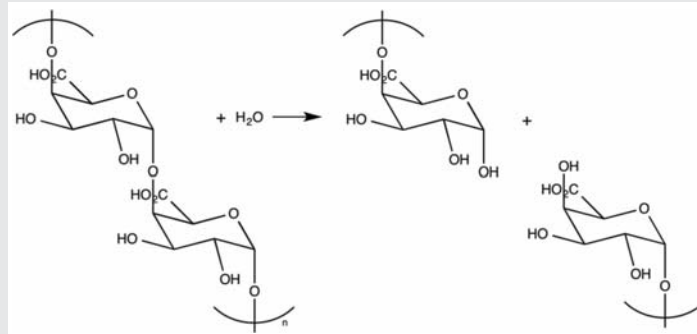
Pectinases, commonly referred to as pectic enzymes, are an important class of enzymes for their uses in industries like wine, paper, and food for the processing of fruits, vegetables, tea, coffee, and can be extracted from actinomycetes, a group of bacteria popular for research for such products as the penicillin and pectinases. Such pectinase enzymes that will work at high temperatures and at appropriate pH conditions can be of benefit at high temperatures, which can be used to speed up these processes. Speed of processing gives an economic gain in commercial applications. This study involved the isolation, purification and characterisation of pectinase enzyme from *Streptomyces thermocarboxydus*. Soil bacterial isolation resulted in seventeen different types of colonies and these from petri were transferred to agar and cultured on pectin containing media at 37° C temperature, and the strain showing maximum pectin clearing detected with iodine vapour. The selected isolate was first sent for sequencing using rRNA technology and phylogenetic analysis. Experiments for culture optimization and enzyme characterization were carried out. The optimum pH and temperature for culture was found out to be 4 and 50 °C, and for the partially purified enzyme, maximum activity, at neutral and alkaline pH and 60 °C. Hence, this enzyme proves to be a promising candidate for commercial applications.

Introduction

Pectin is a naturally occurring substance (a polysaccharide) found in berries, apples and other fruits. When heated together with sugar, it causes a thickening that is characteristic of jams and jellies. It is a structural heteropolysaccharide contained in the primary cell walls of terrestrial plants. It was first isolated and described in 1825 by Henri Braconnot, a chemist and pharmacist, who for the first time depolymerized chitin with acid. Pectin is a complex polysaccharide consisting mainly of esterified D-galacturonic acid residues in an alpha-(1-4) chain. Diagram below shows picture of the structure of pectin.



Commonly referred to as pectinases, pectic enzymes, are an enzyme that breaks down pectin. They are an important class of enzymes for their uses in industries like wine, paper industries and food industry for the processing of fruits, vegetables, tea, coffee and so on.



Pectinase, the enzyme

Pectinases include pectolyase (pectin lyase), pectozyme, and polygalacturonase (PG). Of the three, PG, is the most well studied. PG, hydrolyses the O-glycosyl bonds in pectin's polygalacturonan network, resulting in alpha-1,4-polygalacturonic residues. The rate of hydrolysis is dependent on polysaccharide chain length. Rate of hydrolysis is slow with very short chains (e.g. digalacturonic acid) and fast, with very long chains. The picture above shows the hydrolysis of pectin by polygalacturonan network, resulting in alpha-1,4-polygalacturonic residues.

## Pectinases from fungi and bacteria

Pectinases act on pectin substances. It is naturally present in higher plants and microorganisms. In plants, it hydrolyses the cementing pectin in cell wall to allow remodeling and growth during development. In microorganisms, such as fungi, they help to break the pectin to saprophyte, while the mushrooms hyphae use these enzymes to do the same as it grows and absorbs the nutrients. Commercially, these pectinases are used extensively in a number of different processes that include fruit juice clarification, juice extraction, manufacture of pectin free starch, refinement of vegetable fibers, degumming of natural fibers, wastewater or sewage treatment. They also find their use in cocoa and tobacco industry towards their end-production, and as an analytical tool in the assessment of plant products [1]. In tea and coffee, pectinase treatment accelerates tea fermentation and destroys pectin the foam forming property, and remove mucilaginous coat from coffee beans [1].

Pectinolytic enzymes can be applied in various industrial sectors wherever the degradation of pectin is required for a process. Several microorganisms have been used to produce different types of pectinolytic enzymes [2]. Microbial pectinases account for 25% of the global food and industrial enzyme sales [3] and their market is increasing day by day. These are used extensively for fruit juice clarification, juice extraction, manufacture of pectin free starch, refinement of vegetable fibers, degumming of natural fibers, wastewater treatment, and cocoa and tobacco and as an analytical tool in the assessment of plant products [4]. Pectinase treatment accelerates tea fermentation and also destroys the foam forming property of instant tea powders by destroying pectins. They are also used in coffee fermentation to remove mucilaginous coat from coffee beans [5].

Due to the importance of the pectinase enzyme in biotechnology, lot of researchers have attempted isolation of species that express pectinase, and that are hence, of benefit. One such a study was conducted with the aims of screening pectinolytic microorganisms from coffee pulp and identifying molecularly using 16S rRNA. Another research article records the studying of such species enriched in fruit material.

**Actinomycetes:** Primarily *Actinobacteria* are Gram-positive bacteria with high G+C DNA content. The majority of the *Actinobacteria* are free-living organisms that are widely distributed in both terrestrial and aquatic (including marine) ecosystems [6]. Actinomycetes hold a prominent position as targets in screening programmes due to their diversity and their proven ability to produce novel antibiotic and non-antibiotic lead molecules of pharmaceutical interest.

### Actinomycetes - classification

Actinobacteria represent one of the largest taxonomic units among the 18 major lineages currently recognized within the Bacteria domain. *Actinomycetales* are Gram-positive, but several species have complex cell wall structures that make the Gram staining unsuitable (e.g. *Mycobacteriaceae*). The genera of this phylum exhibit enormous diversity in terms

of their morphology, physiology, and metabolic capabilities. The taxonomy of Actinobacteria has evolved significantly over time with the accumulation of knowledge. The early classification by Buchanan in 1917 placed this bacteria as the order *Actinomycetales*. The classification of these bacteria have now evolved from microscopy morphological, to melanin pigment, and chemotaxonomical, to rRNA to genome sequencing and to new molecular methods of classification. However, actinomycetes have the appearance of filaments or hyphae, superficially resembling many forms of hyphal fungi. Actinobacteria exhibit a wide variety of morphologies, differing mainly with respect to the presence or absence of a substrate mycelium or aerial mycelium, the color of the mycelium, the production of diffusible melanoid pigments, and the structure and appearance of their spores.

**Chemotaxonomic classification:** Chemotaxonomy is the use of the distribution of chemical components to group organisms according to the similarities of their cellular chemistries [7]. The most commonly used chemical components in such systematics are cell wall amino acids, lipids, proteins, menaquinones, muramic acid types, sugars, and the base composition of DNA [8]. At present, a new species cannot be claimed without genetic analysis based on sequencing the 16S rRNA gene and DNA-DNA hybridization, and even genome sequencing is becoming a routine testing. Molecular and chemical composition criteria have been used to group the order Actinomycetales into 14 named suborders. The 16S rRNA gene trees have now been generated with bootstrap support and may thus include less misleading results.

### Actinomycetes – their products

Since the discovery of actinomycin, the first antibiotic from an actinomycete, many commercially important bioactive compounds and anti-tumor agents have been produced using these bacteria (Waksman and Lechvalier, 1962; Tanaka and Omura, 1990). The anti-infective turn-over of over 79 billion US dollars in 2009, includes about 166 antibiotics and derivatives such as the Beta-lactam peptide antibiotics, the macrolide polyketide erythromycin, tetracyclines, aminoglycosides, daptomycin, tigecycline, most of which are produced by actinomycetes. Actinomycetes are the also producers of a large number of natural antitumor compounds. These antitumor compounds belong to several structural classes such as anthracyclines, enediynes, indolocarbazoles, isoprenoids, macrolides, non-ribosomal peptides and others. They exert antitumor activity by inducing apoptosis through DNA cleavage mediated by topoisomerase I or II inhibition, or mitochondrial permeabilization, or inhibition of key enzymes, involved in signal transduction like proteases, or cellular metabolism and also by inhibiting tumor-induced angiogenesis. A surge of recent researches is seeing marine organisms that have attracted special attention in the last years for their ability to produce interesting pharmacological lead including anti-tumour compounds.

In this present study, our aim is two-fold. To determine the culture optimization to obtain a pectinase producing bacteria that works at high temperatures and to determine

enzyme characterization. In order to do this, we aim to isolate culture soil bacteria on agar, and then grow the isolates on petri with agar containing pectin. The isolate with the largest pectin clearance is then to be sent for rRNA technology and phylogenetic analysis. Culture optimization and enzyme standardization are also to be carried out on this isolate and also on partially purified enzyme.

## Materials and Methods

### Isolation and subculturing

**Isolation: Ingredients starch casein nitrogen agar (g/litre):** Soluble starch 10.00, Casein (Vitamin Free), 0.30, KNO<sub>3</sub>, 2.00, MgSO<sub>4</sub>·7H<sub>2</sub>O, 0.05, K<sub>2</sub>HPO<sub>4</sub>, 2.00, NaCl, 2.00, CaCO<sub>3</sub>, 0.02, FeSO<sub>4</sub>·7H<sub>2</sub>O, 0.01, Agar, 18.00

Bacteria from soil sample was collected and the sample diluted, starch casein nitrogen agar was prepared and poured onto sterile autoclaved petri plates, allowed to cool, and the diluted sample transferred. The plates were incubated at 31.5°C and growth was observed after a week. This isolation saw seventeen microorganism colonies.

**Sub-culturing:** Sub-culturing involved each of these organisms being screened for pectinase on pectinase screening agar medium (PSAM) by streaking them

**Pectinase Production Medium:** PSAM was prepared as per the following composition:

0.3gms/100ml, (NH<sub>4</sub>)<sub>2</sub>HPO<sub>4</sub>, 0.2gms/100mlKH<sub>2</sub>PO<sub>4</sub>,  
0.3gms/100ml, K<sub>2</sub>HPO<sub>4</sub>, 0.01gms/100mlMgSO<sub>4</sub>,  
2.5gms/100ml–Agar, 1gm/100ml –Pectin and PH–4.5.

**Identification of isolate with largest clear-zone:** They (petris) were incubated at 37°C in the incubator and growth was observed in 4 days. The plates were exposed to iodine vapours such that the clear zones were visible. The clear zones were measured and compared to find the biggest clear zone. The organism having the biggest clear zone has higher pectinase producing ability. The chosen organism was named isolate IS-1. The isolate was sent for sequencing using rRNA technology and phylogenetic analysis. IS-1 Culture optimisation was carried out by optimizing organism under varying conditions of temperature and pH.

### Culture -Temperature & pH value optimization, and production of crude enzyme

The IS-1 is incubated in pectinase broth under varying pH such as 4, 7 and 12. Similarly it is incubated at varying temperatures of 31°C, 50 °C and at room temperature for culture conditions. After 3 days of incubation, the media from each flask was centrifuged at 10,000rpm and crude enzyme was obtained.

The culture -temperature optimization and pH value optimization curves were calibrated using DNS assay and Lowry method of protein assay. 1ml of substrate (pectin) dissolved in suitable buffer was made to react with the respective crude enzymes for 20min at 35°C. The concentration of substrate

was determined by DNS method. 10ml of water was added for dilution before taking the optical density reading.

### Partial Purification by Ammonium sulphate method, and enzymatic optimization: temperature & pH

For the Ammonium sulfate precipitation method of partial purification, crude enzyme obtained was kept in cold conditions throughout, and ammonium sulfate was added to it gram by gram and stirred continuously until all of the Ammonium sulfate was used completely. The set up was left in cold conditions in the refrigerator overnight. The following morning, the precipitate was collected and centrifuged at 4°C and the protein obtained was dissolved in citrate buffer of pH5.

**Characterization of partially purified enzyme:** The partially purified enzyme which was obtained after ammonium sulphate precipitation was characterized at different pH (5,7,9,12) and Temperature (20°C, 25°C, 40°C, 60°C, 80°C and 100°C) using DNS method, and graph plotted for enzyme activity versus pH and enzyme activity versus temperature

**Purification by dialysis method:** The partially purified enzyme was loaded in the activated dialysis membrane tube and was let to undergo dialysis for 18 hours at 4°C with citrate buffer of pH 5. The buffer was also changed in between to ensure efficient dialysis. The dialyzed sample was frozen at -200°C for 2 hours. The sample was now kept for lyophilization in a lyophilizer.

## Results

This section shows the result of the experiments, which are as follows:

- pH optimization results;
- Temperature optimization results; and
- Results of sequencing using rRNA technology, and phylogenetic analysis

### pH optimization results:

Graph a. pH optimization. The graph below shows the culture optimisation and enzyme characterisation, for pH. For the studied bacteria and the enzyme, pectinase.

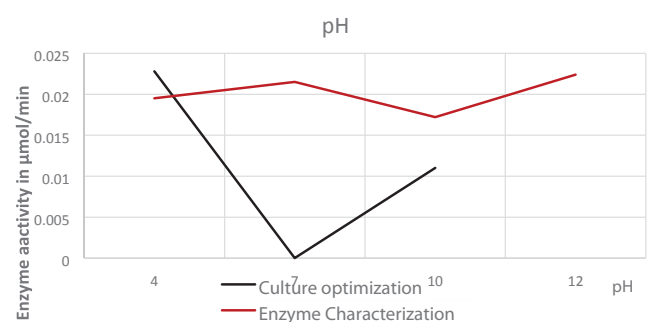


Figure 1: pH.

pH optimisation Graph above shows the culture optimisation and enzyme characterisation for pH for the studied bacteria and the enzyme, pectinase. The culture conditions were optimized and the optimum pH for the culture was found to be 4. The partially purified enzyme is seen to show maximum activity at neutral and alkaline pH.

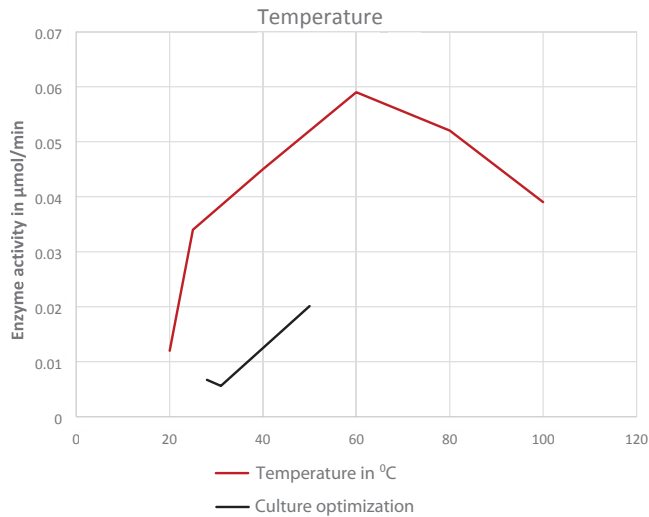


Figure 2: Temperature.

## Temperature optimization results

Figure shows relation between Temperature and Enzyme activity. The partially purified enzyme was found to have its optimum activity at 60 °C. The culture conditions were optimized and the optimum temperature for the culture was found to be 50 °C.

## Results of sequencing using rRNA technology, and phylogenetic analysis

IS-1 had the biggest clear zone among all the seventeen isolates in the pectinase screening test. The chosen organism was isolate IS-1. The isolate was sent for sequencing using rRNA technology and for phylogenetic analysis. The isolate was found, by this rRNA technology, to be *Streptomyces thermocarboxydus*

### a. The sequence: Result of sequencing

#### >ACT19R\_Seq92

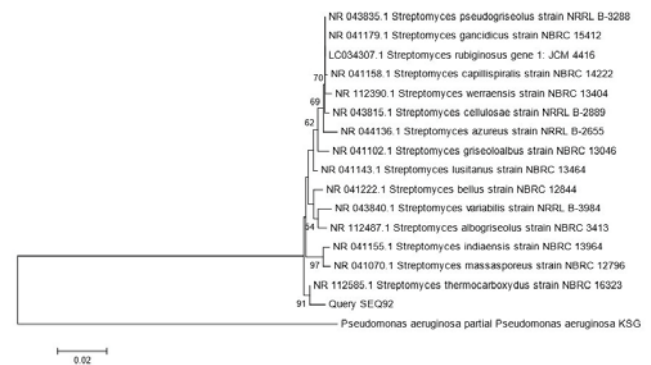
```
CTCCCAAGAGTTTGATCATGGCTCAAGGACGAACGCTGGCGGCGTGCCTTAACA
CATGCAAGTCGAACGATGAAGCCCTTTCGGGGTGGATTAGTGGCGAACGGGTG
AGTAACACGTGGGCAATCTGCCCTGCATATGGGGACAAGCCCTGGAACCGGG
GTCTAATACCGGATACTGATCGCCTTGGGCATCCTTGGTGATCGAAAGCTCCGG
CGGTGCAGGATGAGCCCGCGCCTATCAGCTTGTGGTGAGGTAATGGCTCAC
CAAGGCGACGACGGGTAGCCGGCTGAGAGGGCGACCGCCACACTGGGACT
GAGACACGGCCAGACTCCTACGGAGGCAGCAGTGGGGAATATTGCACAAAT
GGGCGAAAGCCTGATGCAGCGACGCCGCTGAGGGATGACGGCCTTCGGGTTG
TAAACCTCTTTCAGCAGGGAAGAAGCGAAAGTACGGTACCTGCAGAAGAAG
CGCCGGCTAACTACGTGCCAGCAGCCGGTAATACGTAGGGCGGAGCGTTG
TCCGGAATTATTGGGCGTAAAGAGCTCGTAGGGCGCTTGTGCGCTCGGTTGTG
AAAGCCCGGGCTTAAACCCGGTCTGCAGTCGATACGGGCAGGCTAGAGTTC
GGTAGGGGAGATCGGAATTCCTGGTGTAGCGGTGAAATGCGCAGATATCAGGA
GGAACACCGGTGGCGAAGGCGGATCTCTGGGCCGATAGTGACGGTGAGGAGC
```

GAAAGCGTGGGGAGCGAACAGGATTTGTACCCTGGTAGTCCACGCCGTAACGG GT-  
GGGCACCTAGGGTGTGGGGCGACATTCACTGTGCGAAGAGAAGCGGTCTGAATATAGCC

### b. NCBI-BLAST results (Top 5-10 Hits) - i. Table, NCBI rRNA blast result

The blast gave the following strains of the same species, the *Streptomyces*, with their corresponding Ident, the percentage rRNA sequence homologies.

### ii. Phylogenetic Tree (along with scale bar and bootstrap values above 50%).



## Discussion

The selected 'isolate' was first sent for sequencing using rRNA technology and phylogenetic analysis. Experiments for culture optimization and enzyme characterization were carried out. The optimum pH for the culture was found to be 4 and temperature was found to be 50 °C. For the partially purified enzyme, maximum activity was at neutral and alkaline pH, and the optimum temperature was 60 °C. Hence, this enzyme proves to be a promising candidate for commercial applications, where high temperatures may be benefitting faster reaction and hence more economically viable processes can be achieved to meet the increasing demand of the products.

The focus of this study was to obtain a pectinase that could withstand higher working temperatures for commercial applications. Soil bacteria were isolated, and the isolates plated on pectin containing agar, which resulted in giving IS-1, an isolate with the highest pectin clearance. This selected isolate was first sent for sequencing using rRNA technology and phylogenetic analysis. The result of this sequencing and analysis are discussed later below.

Culture optimisation and enzyme characterisation were carried out for pH and temperature. Graph, in Figure 1. results, shows relation between 'pH vs culture growth' and 'pH vs enzyme activity'. The culture conditions were optimized and the optimum pH for the culture was found to be 4. The partially purified enzyme shows maximum activity at both neutral and alkaline pH. The optimum pH for the culture is determined to be acidic while that for the partially purified enzyme is

Table 1:

Description		Max score	Total score	Query cover	E value	Ident	Accession
Streptomyces thermocarboxydus strain							
NBRC 16323 16S ribosomal RNA gene, partial sequence		2052	2052	97%	0.0	98%	NR_112585.1
Description		Max score	Total score	Query cover	E value	Ident	Accession
Streptomyces thermocarboxydus strain							
AT37 16S ribosomal RNA gene, partial sequence		2047	2047	97%	0.0	98%	NR_026072.1
Streptomyces rubiginosus gene for	16S						
ribosomal RNA, partial sequence, strain: JCM 4416		2002	2002	99%	0.0	97%	LC034307.1
Streptomyces pseudogriseolus strain							
NRRL B-3288 16S ribosomal RNA gene, partial sequence		2001	2001	99%	0.0	97%	NR_043835.1
Streptomyces speibonae strain PK-Blue							
16S ribosomal RNA gene, partial sequence		1997	1997	99%	0.0	97%	NR_025212.1
Streptomyces indiaensis strain NBRC							
13964 16S ribosomal RNA gene, partial sequence		1995	1995	97%	0.0	97%	NR_041155.1
Streptomyces nigra strain 452 chromosome,							
complete genome		1991	11950	99%	0.0	97%	CP029043.1
Streptomyces sp. strain 452 16S ribosomal							
RNA gene, partial sequence		1991	1991	99%	0.0	97%	MG572975.1

neutral and alkaline. Culture refers to the growth of the whole organism. The pH for this culture growth when optimised is acidic because the organism has evolved to live in the acidic environment. The optimum pH for the enzyme is neutral or alkaline, meaning that internal environment of the bacteria must be maintained at neutral or alkaline conditions.

During growth at acidic pH values, *Streptococcus can* increase production of their F-ATPases. By pumping protons out of cells, these proton pumps can function to assist in maintaining or even increasing internal pH values [9]. Respiration by the bacteria, under aerobic conditions releases carbon dioxide, and while reacting with water turns its surrounding acidic. The *Streptococcus* can also be facultative anaerobic.

The partially purified enzyme was found to have its optimum activity at 60 °C. The culture conditions were optimized and the optimum temperature for the culture was found to be 50 °C, ten degrees less than for the partially purified enzyme. The culture, consisting of the whole organism has other enzymes such as the respiratory enzymes, that may be sensitive at higher temperatures, and hence a temperature above 50 °C would begin to degrade it. Moreover, the sampling was done in a tropical country and hence the higher temperature tolerance evolution is evident. Of course, it must be noticed that the enzyme has its optimum activity at 60 °C, and this is unusually higher as we would have expected the optimum temperature to have been around the region of the soil temperature, say about 35 to 40 °C. The organism must be a result of evolution and gain mutation, which enables to work at such a high temperature of 60 °C.

The result is that we identified a species that produces pectinase that is tolerant and optimal at higher temperatures,

of about 60 °C. The main use of this particular enzyme is that, this high temperature tolerant enzyme can be of immense use in industrial applications where speed of process may be necessary for increased economics.

#### 16s rRNA technology based sequencing and phylogenetic analysis:

The isolate that is found to give the largest pectin clearance was sent for identification by rRNA sequencing technology and phylogenetic analysis. The isolate is found to have 99% homology or sequence match with the species *Streptomyces thermocarboxydus* strain, NBRC 16323. The phylogenetic analysis further tells us the closeness of this species-strain to another species-strain of this same species, the *Streptomyces*, with the bootstrap value, of course, the closeness or distance to a number of closely-related species.

#### The Phylogenetics – the bootstrap explained

The bootstrap value gives the chance value of this species strain occurring in its closeness to the neighboring species or species strain under study. The closest *Streptomyces* strain to this identified strain is , NR 041102.1 *Streptomyces variabili*, is strain NBRC 13046 with a bootstrap of 97% chance of it being in its place. Of course, the 97% indicates that there might be another or other species with the same chance of 97% being in the place of this strain, the strain *Streptomyces pseudogriseoloalbus*. The next strain that is closest in the phylogeny as it stands at the moment is the NR 041102.1 *Streptomyces griseoloalbus* strain NBRC 13046 with a bootstrap value of 91%.

#### Conclusion

The identification of the other species-strains closer to the

*Streptomyces thermocarboxydus* strain under analysis will help find other species–strains that may be close to this species–strain under analysis and hence there is a possibility of getting a mutant enzyme pectinase, that maybe more resistant to higher temperatures as compared to the enzyme that is found in this study. The uses of the pectinase enzyme in commercial application can be seen in everyday life and can be seen in the production lines including fruit juices and wine brewing. To conclude, it must be noted that our study and such studies involving phylogenetics, culture optimization and enzyme standardization can help find enzymes that have a more useful temperature withstanding abilities to the one in hand, either for this application or for others. It can also be taken a step further, and controlled mutations of this enzyme can also help produce a sequence and hence find enzyme that is slightly different and more effective than, probably, all that may be present in the close existing species.

## Acknowledgment

Wish to acknowledge with thanks expert suggestions, advice and technical support provided by Prof. S A Gautham and Prof. Sunil More, Dean and Prof – Dept. of Life Sciences, Dayananda Sagar University, Bangalore. Would also like to express sincere thanks to NCIM, Pune for their technical help on 16s rRNA technology sequencing.

## References

- Oumer O, Abate D (2019) Screening and Molecular Identification of Pectinase Producing Microbes from Coffee Pulp. 2010: 2961767: 7. [Link: https://goo.gl/kXNbss](https://goo.gl/kXNbss)
- Jayani RS, Shukla K, Gupta R (2010) Screening of bacterial strains for polygalacturonase activity: its production by bacillus sphaericus (MTCC 7542). *Enzyme Research* 2010: 306785. 5. [Link: https://goo.gl/hK2yXa](https://goo.gl/hK2yXa)
- Jayani RS, Gupta R (2005) Microbial pectinolytic enzymes: a review. *Process Biochemistry* 40: 2931–2944. [Link: https://goo.gl/gV6CdF](https://goo.gl/gV6CdF)
- Alkorta I, Garbisu C, Llama MJ, Serra JL (1998) Industrial applications of pectic enzymes: a review. *Process Biochemistry* 33: 21–28. [Link: https://goo.gl/tpVFvS](https://goo.gl/tpVFvS)
- Sieiro C, Fraga BG, Seijas JL, Da Silva AF, Villa TG (2012) Microbial Pectic Enzymes in the Food and Wine Industry, *Food Ind. Process. - Methods Equip.* [Link: https://goo.gl/vge6b4](https://goo.gl/vge6b4)
- Macagnan D, Romeiro RDS, de Souza JT, Pomella AWV (2006) Isolation of actinomycetes and endospore-forming bacteria from the cacao pod surface and their antagonistic activity against the witches' broom and black pod pathogens. *Phytoparasitica* 3: 122–132. [Link: https://goo.gl/9wXvvg](https://goo.gl/9wXvvg)
- Goodfellow M, Minnikin DE (1985) *Chemical methods in bacterial systematics.* Academic Press, London, United Kingdom. Information on EC 3.2.1.15 - polygalacturonase". BRENDA.
- O'Donnell AG (1988) Recognition of novel actinomycetes, p 69–88. In Goodfellow MM, Williams ST, Mordarski M (ed), *Actinomycetes in biotechnology.* Academic Press, London, United Kingdom.
- Corcoran B, Stanton C, Fitzgerald G, Ross R (2019) Survival of Probiotic Lactobacilli in Acidic Environments Is Enhanced in the Presence of Metabolizable Sugars. [Link: https://goo.gl/5T9y6L](https://goo.gl/5T9y6L)
- Pressey R, Reger BJ (1989) Polygalacturonase in pollen from corn and other grasses. *Plant Science* 59: 57–62. [Link: https://goo.gl/KzYR8t](https://goo.gl/KzYR8t)

## Discover a bigger Impact and Visibility of your article publication with Peertechz Publications

### Highlights

- ❖ Signatory publisher of ORCID
- ❖ Signatory Publisher of DORA (San Francisco Declaration on Research Assessment)
- ❖ Articles archived in worlds' renowned service providers such as Portico, CNKI, AGRIS, TDNet, Base (Bielefeld University Library), CrossRef, Scilit, J-Gate etc.
- ❖ Journals indexed in ICMJE, SHERPA/ROMEO, Google Scholar etc.
- ❖ OAI-PMH (Open Archives Initiative Protocol for Metadata Harvesting)
- ❖ Dedicated Editorial Board for every journal
- ❖ Accurate and rapid peer-review process
- ❖ Increased citations of published articles through promotions
- ❖ Reduced timeline for article publication

Submit your articles and experience a new surge in publication services (<https://www.peertechz.com/submission>).

*Peertechz journals wishes everlasting success in your every endeavours.*

**Copyright:** © 2019 Bharadwaj PS, et al. This is an open-access article distributed under the terms of the Creative Commons Attribution License, which permits unrestricted use, distribution, and reproduction in any medium, provided the original author and source are credited.